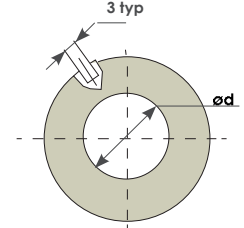
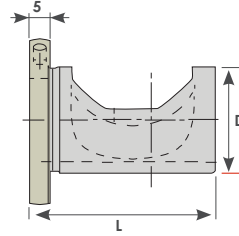
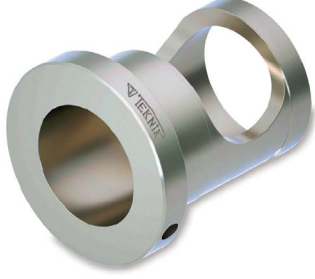


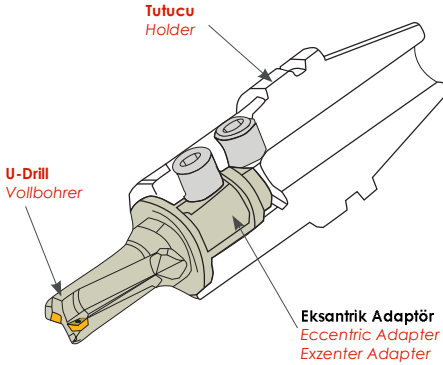
U-DRILL EKSANTRİK ADAPTÖRÜ ADAPTOR FOR U-DRILLS



Adaptörün radyal olarak ayarlanmasını kolaylaştırmak için kullanılır.
(This pin used to ease radial adjustment of the sleeve.)

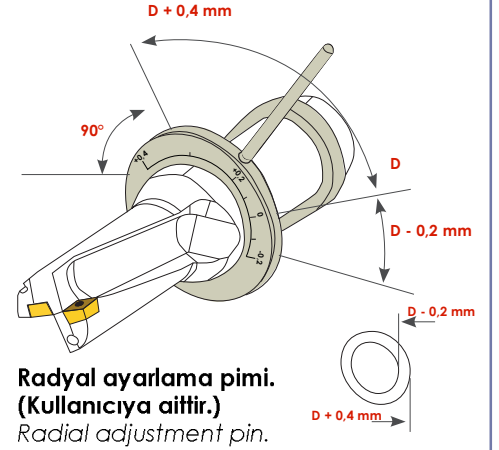
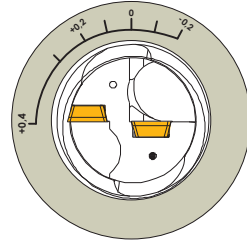
Sipariş Kodu Order Code Best.-Nr.	Stok/Stock/Lager	Ürün Kodu Product Code Produkt-Code	Ölçüler (mm) Dimensions (mm) Abmessungen (mm)		
			D	d	L
UA 10	●	D25 d20 L44	25	20	44
UA 12	●	D32 d25 L46	32	25	46
UA 14	●	D40 d32 L55	40	32	55

● Stokta / In Stock / Lager ○ Sınırlı Stok / Limited Stock / Begrenzte Lagerhaltung

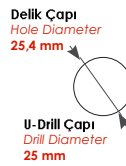
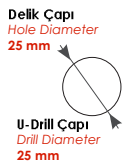


Frezeleme tezgahında takma uçlu matkabın nominal çapı, matkabın ekseninin, sipindle eksenine göre ötelenmesiyle değişebilir.

On a milling machine the drill's nominal diameter can be changed by shifting the drill's axis out of the tool spindle.



Radyal ayarlama pimi.
(Kullanıcıya aittir.)
Radial adjustment pin.



U-Drill'in üzerindeki düz çizgi adaptörün sıfır rakamının üzerine konulmalıdır.

AET'nin (eksantrik adaptörün) çevrilmesini kolaylaştırmak için AET'nin üzerindeki deliğe, metal bir çubuk ya da vida anahtar yerleştirilebilir. AET'yi ayarlamadan önce tutucunun vidasını hafifçe çözün.

The adjustment marking should be located perpendicular to the flat on the circumference of the U-DRILL flange.

To facilitate the rotation of the adapter, a metal rod or a screw key may be inserted into a hole on the exentric adapter flange. Unlock adapter screw before adjusting adaptor.