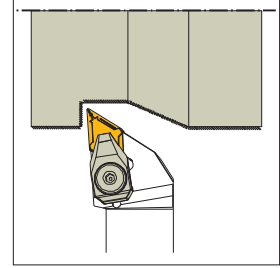
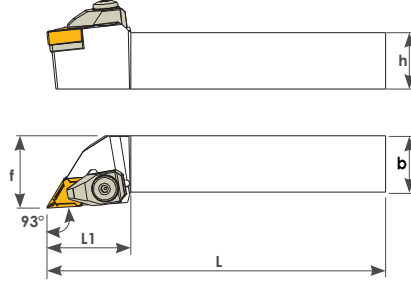
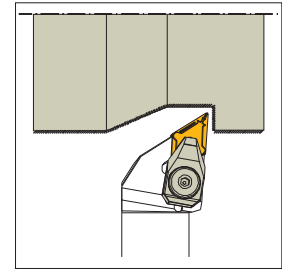
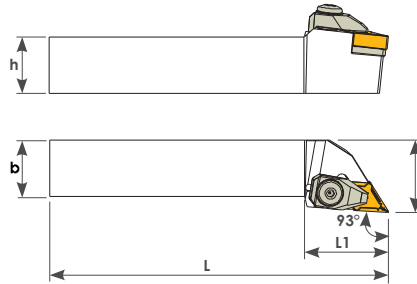
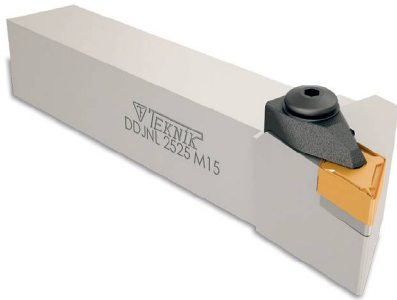


93° DDJNR



Sipariş Kodu Order Code Best.-Nr.	Stok/Stock/Lager	Ürün Kodu Product Code Produkt-Code	Ölçüler (mm) Dimensions(mm) Abmessungen (mm)					Kullanılan Uç Insert WSP	Baskı Civatası Locking Screw Verriegelungs Schraube	Aflık Shim U-Platte	Aflık Civatası Shim Screw U-Platte Schraube	Baskı Kepi Clamp Spann pratze	Yay Spring Feder	Pul Stamp U-Scheibe	Anahtar Allen Key Inbuss- Schlüssel
			L	L1	h	f	b								
D167	●	DDJNR 2020 K11	125	35	20	25	20	DN-- 1104	TC 046 M5	TA 030	TC 075 M4x11	BK 024	BY 041	BSP 031	3 Allen
D168	●	DDJNR 2525 M11	150	35	25	32	25								
D170	●	DDJNR 2020 K15	125	38	20	25	20	DN-- 1506	TC 044 M6	TA 014-1	TC 038 M4x10	BK 020	BY 040	BSP 030	5 Allen
D172	●	DDJNR 2525 M15	150	38	25	32	25								
D174	●	DDJNR 3232 P15	170	38	32	40	32								

93° DDJNL



Sipariş Kodu Order Code Best.-Nr.	Stok/Stock/Lager	Ürün Kodu Product Code Produkt-Code	Ölçüler (mm) Dimensions(mm) Abmessungen (mm)					Kullanılan Uç Insert WSP	Baskı Civatası Locking Screw Verriegelungs Schraube	Aflık Shim U-Platte	Aflık Civatası Shim Screw U-Platte Schraube	Baskı Kepi Clamp Spann pratze	Yay Spring Feder	Pul Stamp U-Scheibe	Anahtar Allen Key Inbuss- Schlüssel
			L	L1	h	f	b								
D307-1	●	DDJNL 2020 K11	125	35	20	25	20	DN-- 1104	TC 046 M5	TA 030	TC 075 M4x11	BK 024	BY 041	BSP 031	3 Allen
D308	●	DDJNL 2525 M11	150	35	25	32	25								
D310	●	DDJNL 2020 K15	125	38	20	25	20	DN-- 1506	TC 044 M6	TA 014-1	TC 038 M4x10	BK 020	BY 040	BSP 030	5 Allen
D312	●	DDJNL 2525 M15	150	38	25	32	25								
D314	●	DDJNL 3232 P15	170	38	32	40	32								

● Stokta / In Stock / Lager ○ Sınırlı Stok / Limited Stock / Begrenzte Lagerhaltung